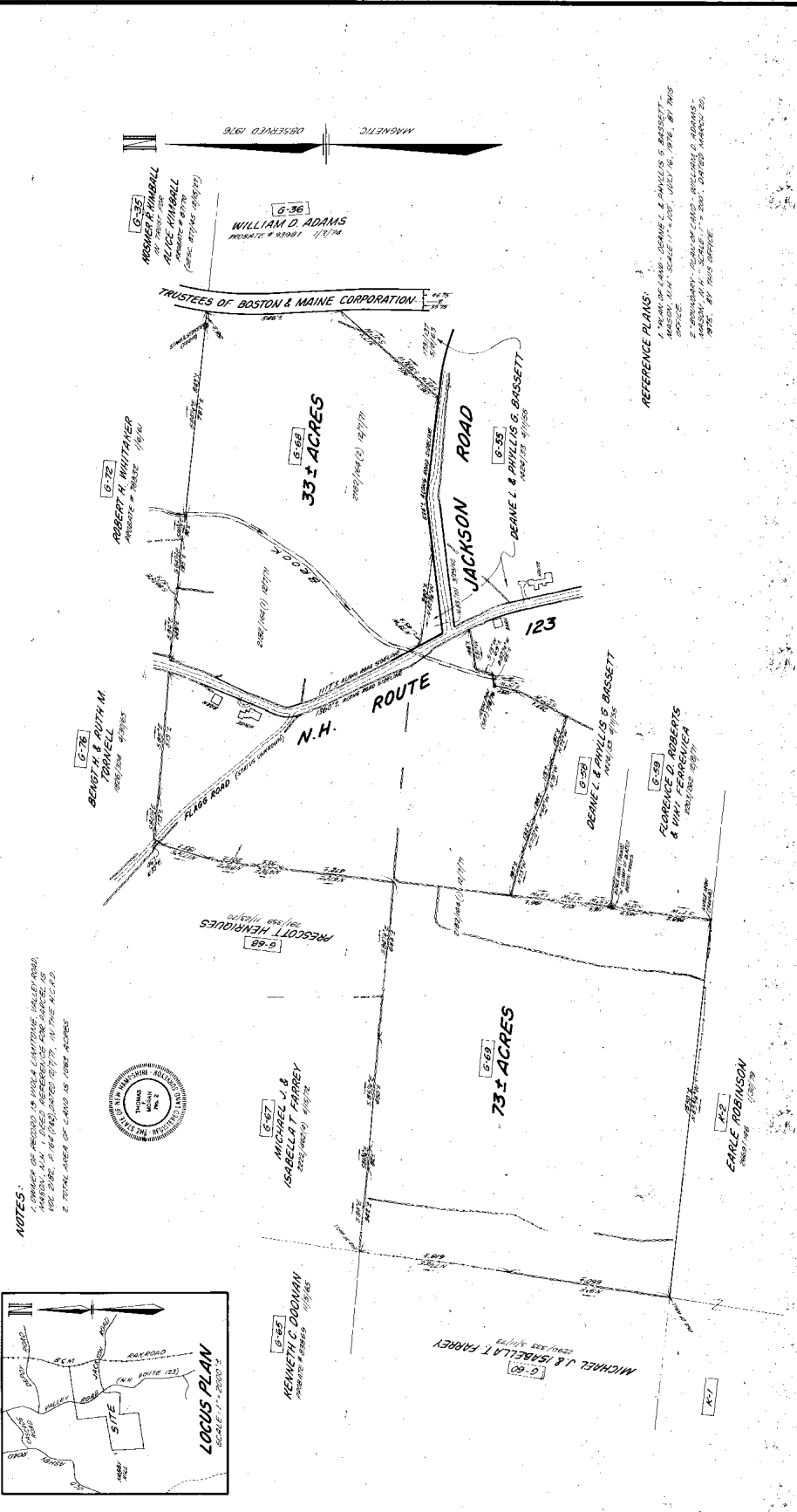


THOMAS F. MORAN INC.
 Surveyors
 13 South Street
 Bedford, NH 03302
 P1302731
 Dec 26



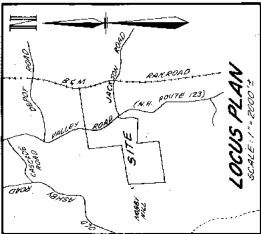
PLAN OF LAND **VIOLA LIMITONE** **MASON, N.H.** SCALE: 1" = 200'

NOV. 29, 1979



NOTES:

1. CORNER OF RECORD IN VIOLA LIMITONE, VALLEY ROAD, 1/2 AC. 200', 1/4 AC. (PRELIMINARY) 127' 11" IN THE N.E. CORNER.
 2. TOTAL AREA OF LAND IS 108.4 ACRES.



REFERENCE PLANS:
 1. PLAN OF LAND - DEANE L. & PHYLLIS G. BASSETT - 1/2 AC. 200', 1/4 AC. (PRELIMINARY) 127' 11" IN THE N.E. CORNER.
 2. BOUNDARY - PLAN OF LAND - WILLIAM D. ADAMS - 1/2 AC. 200', 1/4 AC. (PRELIMINARY) 127' 11" IN THE N.E. CORNER.
 3. BOUNDARY - PLAN OF LAND - DEANE L. & PHYLLIS G. BASSETT - 1/2 AC. 200', 1/4 AC. (PRELIMINARY) 127' 11" IN THE N.E. CORNER.

APPROVED BY THE MASSACHUSETTS BOARD OF REGISTRATION OF PROFESSIONAL ENGINEERS AND ARCHITECTS
 NOV 29 1979
 CHAIRMAN: Kenneth A. [Signature]
 SECRETARY: [Signature]

DATE	DESCRIPTION	BY	CHK
NOV 29 1979	FIELD NOTES & PAPER	[Signature]	[Signature]